

in house

ISSUE 2

► **Welcome to our second newsletter.**

Happy New Year and what a year its promising to be. We are off to a good start with some exciting news for you all.

After much soul searching we have decided on a change of direction for Vivienne James Interiors. Thanks to you, our valued clients, our design business has grown and grown to the point where, like all good interior designers, we no longer find it practical to keep the retail side of our business operational. We close our store on 19 February 08. This is a very positive move for us as it enables us to continue, grow and expand in the area we do best, Interior Design. For all our clients nothing changes. Our team is still together, we have our studio in Woodbury, one in Christchurch and Sheryll is in Timaru. The only difference for you will be that we will come to you.

So dont hesitate, call us for your next appointment.



cherrytree

Vivienne James Interiors have been selected to be the interior designers for Cherrytree in Canterbury.

march madness

March is the month for madness and we are no exception. This is month we begin our advertising in New Zealand House & Garden. Look for our advertismment in the directory under Interiors and Interior Design



► **invitation**

we invite you, our valued clients, to preview our change of direction sale prior to our advertising campaign which begins 26 jan 08.

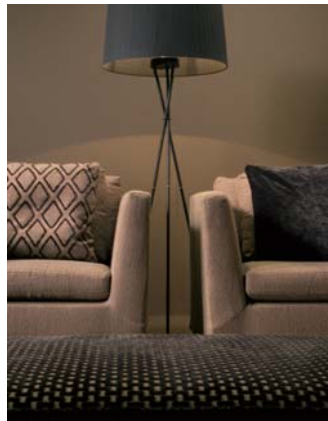
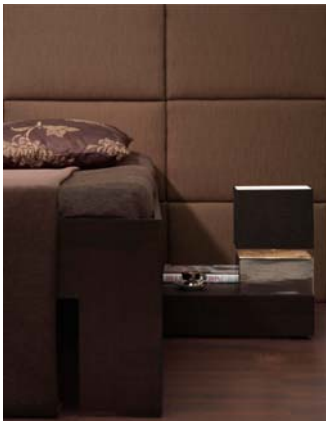
we would love to see you.

sale excludes fabrics and accessories.
300 hilton highway, washydye, timaru

the landings

The Landings is the \$12 million five-star hotel to be built on the Bay Hill between Resene and the Shell Service Station.

Vivienne James Interiors are the designers selected for this exciting new project, scheduled to open in November/December this year. We feel very privileged to be part of the team involved and have already begun work on the interiors. Watch this space.



quarterly cocktail perfect pear



Build in a tall glass with ice.

Add 3 parts Absolut Poire.

Top up with soda water.

Stir and garnish with 2 slices of lime.



brought to you by

► **viviennejames**
interior design

m 027 444 7633 t 03 688 2974

f 03 688 2975

e viviennej@xtra.co.nz

www.viviennejames.co.nz

SOUTH CANTERBURY

910 woodbury rd, woodbury RD21

CANTERBURY

1 macmillan ave, cashmere, christchurch
by appointment